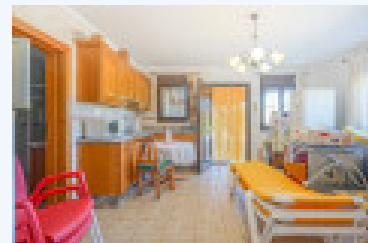
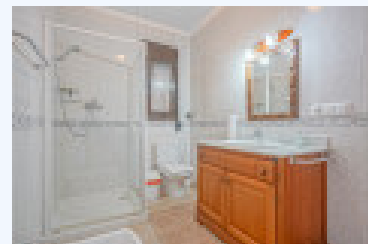


60-4251-3, BEAUTIFUL COUNTRY HOUSE WITH VINEYARDS FOR SALE IN BENITACHELL

Sold. € 875.000,00



This beautiful country house is located on a plot of more than 10,000 m2 in the middle of the valley between Benitachell and the Gulf of Jávea. There are panoramic views over the rolling countryside up to the Montgó in Jávea. On the south side of the villa is a large naya with a stove, adjacent is a long corridor where there is a kitchen, a dining room, a lounge with a stove, a guest toilet and a double bedroom. The corridor ends in a double bedroom with an en suite bathroom and a balcony. Fr

This beautiful country house is located on a plot of more than 10,000 m2 in the middle of the valley between Benitachell and the Gulf of Jávea. There are panoramic views over the rolling countryside up to the Montgó in Jávea. On the south side of the villa is a large naya with a stove, adjacent is a long corridor where there is a kitchen, a dining room, a lounge with a stove, a guest toilet and a double bedroom. The corridor ends in a double bedroom with an en suite bathroom and a balcony. From the kitchen there is access to a large balcony. Adjacent to the kitchen is also a utility room. The first floor consists of a separate guest house with a living-dining room with an open kitchen, a double bedroom, a bathroom and a spacious terrace with a wooden pergola. On this floor there are also 3 garages with direct access to the house, a wine cellar and a storage room and a machine room. In addition, there is also an attic that extends over the entire surface of the house, providing very large storage space. Adjacent to the house is a sun terrace with a swimming pool and another beautiful wooden pergola. A large part of the land currently consists of several vineyards with three different grape varieties (Chardonnay, Merlot and Tempranillo). In addition, there is a very large flat plot with a variety of fruit trees. Here there is also a large greenhouse currently used as storage for gardening equipment. The house has a well and is equipped with both thermal and photovoltaic solar panels, making it extremely energy efficient! The property is also connected to the water and electricity networks. Due to its central location, in just 3 minutes you can reach the village center of Benitachell where all facilities such as supermarkets, schools, pharmacies, etc., can be found. The sandy beach of Jávea can be reached in just 12 minutes and that of Moraira in 15 minutes. The golf club of Jávea is less than a km away. A beautiful property located in an idyllic landscape, ideal for anyone seeking peace and nature.

BASE INFORMATION:

Bed : 3
Bath : 3

LAND INFORMATION:

Square feet : 409
or meters
Lot Size : 10300

CONVENIENCE:

General Amenities: Storage Room,Blinds,
Appliance Amenities: Oven,Wood Stove,
Community Amenities: Garden,
Exterior Amenities:
Balcony,Garage,Swimming pool,Terrace,
Interior Amenities: Fitted wardrobes,